

# Stand In Holy Places

(Savior, More Like Thee)

Mary Jones  
Nancy Jenkins

♩ = 85

The piano introduction consists of two staves in 4/4 time. The right hand starts with a treble clef and a key signature of one flat (B-flat). It begins with a series of chords and a melodic line. The left hand starts with a bass clef and plays a simple bass line.

5

The first system of the song features a vocal line and piano accompaniment. The vocal line is in 4/4 time and includes two lines of lyrics. The piano accompaniment consists of two staves. The right hand has a treble clef and the left hand has a bass clef. There are triplets in the vocal line and piano accompaniment.

How can I be more ho-ly and pure? How can I have more faith to en-dure?  
How can I be more pat-ient and kind? How can I have more strength to re-fine?

9

The second system of the song features a vocal line and piano accompaniment. The vocal line is in 4/4 time and includes two lines of lyrics. The piano accompaniment consists of two staves. The right hand has a treble clef and the left hand has a bass clef. There are triplets in the vocal line and piano accompaniment.

How can I have hope giv-en to me? Sav-ior, more like Thee. If I  
How can I be-come one who be-lieves? Sav-ior, more like Thee.



## Stand In Holy Places

13

stand in ho - ly plac - es where will I be? If I seek to know the Sav - ior, my

Detailed description: This system contains the first two staves of music. The top staff is a vocal line in treble clef, starting at measure 13. It features a melodic line with a triplet of eighth notes in the second measure. The bottom staff is a piano accompaniment in grand staff (treble and bass clefs). It provides harmonic support with chords and moving lines in both hands.

16

heart could be free from the sin that holds me down. I be-lieve! - If I

Detailed description: This system contains the second two staves of music. The top staff is a vocal line in treble clef, starting at measure 16. It continues the melodic line with another triplet of eighth notes in the first measure. The bottom staff is a piano accompaniment in grand staff, providing harmonic support with chords and moving lines in both hands.

19

stand in ho - ly plac - es Sav - ior, more like Thee.

Detailed description: This system contains the final two staves of music. The top staff is a vocal line in treble clef, starting at measure 19. It concludes the phrase with a final note and a double bar line. The bottom staff is a piano accompaniment in grand staff, providing harmonic support with chords and moving lines in both hands, ending with a double bar line.

Stand In Holy Places

23



Feel the love of the Lord. He will help you grow. -

23

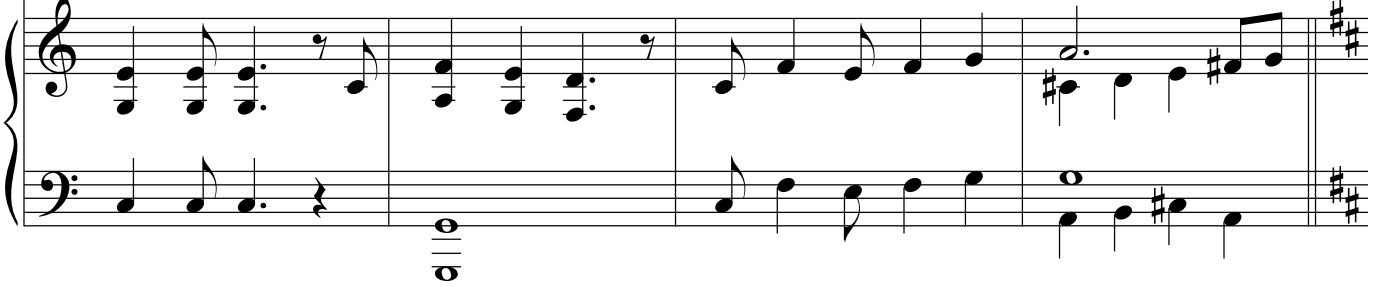


27



Don't give in, He knows you can. Stand up, come on, let's go! I will

27



31



stand in ho-ly plac-es, there will I be. I will seek to know the Sav-ior. My

31



## Stand In Holy Places

34

heart will be free from the sin that holds me down. I be-lieve! - I will

37

stand in ho - ly plac - es Sav - ior, more like

39

Thee.